

An earlier autoimmune diagnosis **starts with you**



Often autoimmune conditions involve vague and overlapping symptoms, making them difficult to identify. Currently, many patients with autoimmune disease experience delayed referral, diagnosis, and treatment.^{1,2} This can result in permanent joint damage and an even smaller chance of remission.³

Recommended time after symptom onset to visit rheumatologist

Within 6 weeks³

Current reported wait times for new patients to see rheumatologist

Over 6 months¹

9 out of 10 affected patients receive a late rheumatoid arthritis diagnosis⁴

The need for support from primary care providers

Disease-specific autoimmune screening in primary care can help patients get the care they need sooner by mitigating the impact of rheumatologist shortages and changing population trends.



Rheumatologist shortage

91 million Americans currently living with rheumatic disease with fewer than 5,600 active board-certified rheumatologists to treat them⁵



Recent increase in at-risk population

>100 million confirmed US COVID-19 cases⁶ with new data suggesting this population has a significantly higher risk of autoimmune disease⁷



Comorbidities in autoimmune disease

25% of Americans with an autoimmune condition have more than 1 disease⁸

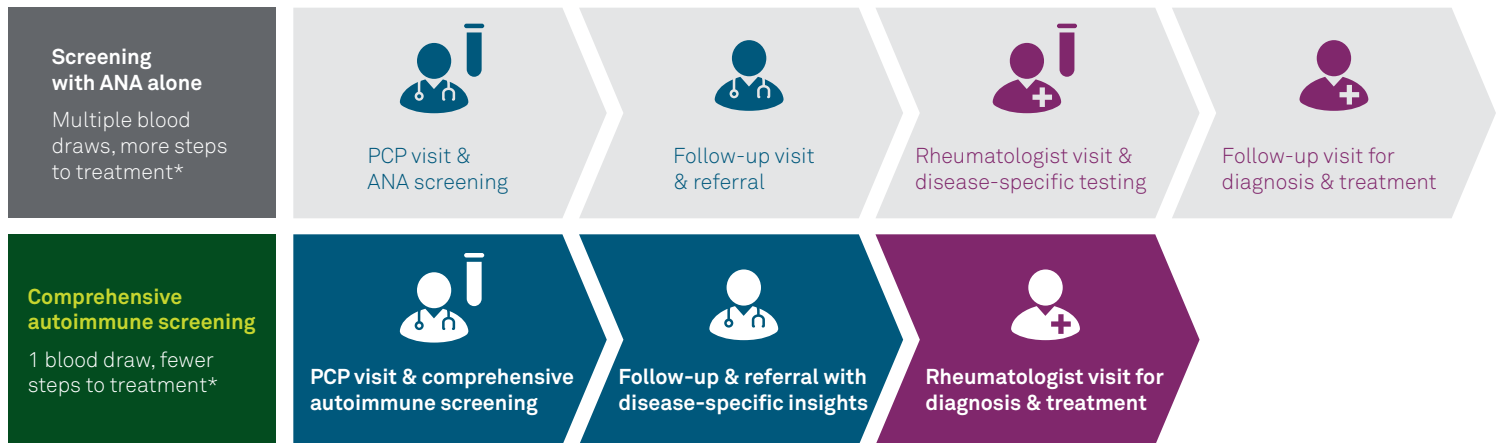


How you can streamline autoimmune care

Your role as a primary care provider is pivotal. Help improve patient outcomes by using a **comprehensive screening approach**.

Fewer steps. Faster diagnosis.

Antinuclear antibody (ANA) screening alone cannot diagnose the specific autoimmune condition.⁹ In fact, positive ANA results do not definitively rule out healthy patients either,¹⁰ so referrals based only on ANA results can lead to unnecessary rheumatologist visits.



*The number of visits, referrals, and ordered tests may vary based on the specific patient case and the clinician's decisions.

Comprehensive autoimmune screening delivers more answers with a single test code,¹¹ so PCPs can make the right referral the first time—and help limit disease progression.

Go beyond ANA

Quest's autoimmune screening panels test for ANA plus the most informative disease-specific markers, so you can help narrow down the diagnosis earlier.

Cascade

A reflex cascade approach to screen for the 8 most common autoimmune diseases in 1 blood draw



ANALyze™

A full-picture approach to detect 20+ analytes with 1 sample for identifying overlapping conditions



Guide your patients in the right direction

Learn more about Quest's comprehensive autoimmune panels at DiagnoseAutoimmune.com

References

1. American College of Rheumatology Responds to the Senate Health, Education, Pension, & Labor Committee (HELP) Request for Information (RFI) on the Healthcare Workforce Shortage. American College of Rheumatology. Published March 20, 2023. Accessed July 18, 2023. <https://assets.contentstack.io/v3/assets/bltee37abb6b278ab2c/bltf9244a31c1fd18fe/acr-help-workforce-rfi-response.pdf>
2. Letters to Policy Makers. American College of Rheumatology website. Accessed August 10, 2023. <https://rheumatology.org/letters-to-policy-makers>
3. Niemantsverdriet E, Dougados M, Combe B, van der Helm-van Mil AHM. Referring early arthritis patients within 6 weeks versus 12 weeks after symptom onset: an observational cohort study. *Lancet Rheumatol*. 2020;2(6):e332-e338. doi:10.1016/s2665-9913(20)30061-8
4. Johnson K, Sawicki C, Sotelo C, Kalevar T, Lardeux S, Casadio F, Baghdadi D, Hamburger M, Avalos-Reyes E, Johnson K. Medical savings of timely rheumatoid arthritis diagnoses [abstract]. *Arthritis Rheumatol*. 2020; 72 (suppl 10). Accessed July 19, 2023. <https://acrabstracts.org/abstract/medical-savings-of-timely-rheumatoid-arthritis-diagnoses/>
5. Jafarzadeh SR, Felson DT. Updated Estimates Suggest a Much Higher Prevalence of Arthritis in United States Adults Than Previous Ones. *Arthritis Rheumatol*. 2018;70(2):185-192. doi:10.1002/art.40355
6. World Health Organization. WHO Coronavirus Disease (COVID-19) Dashboard. World Health Organization. Updated July 12, 2023. Accessed July 18, 2023. <https://covid19.who.int/region/amro/country/us>
7. Chang R, Yen-Ting Chen T, Wang SI, Hung YM, Chen HY, Wei CCJ. Risk of autoimmune diseases in patients with COVID-19: A retrospective cohort study. *eClinicalMedicine*. 2023;56:101783. doi:10.1016/j.eclinm.2022.101783
8. Rare autoimmune disease: individually rare, collectively common. American Autoimmune Related Diseases Association website. Accessed March 15, 2023. <https://autoimmune.org/resource-center/about-autoimmunity/>
9. Yazdany J, Schmajuk G, Robbins M, et al. Choosing wisely: the American College of Rheumatology's Top 5 list of things physicians and patients should question. *Arthritis Care Res (Hoboken)*. 2013;65:329-339.
10. Kavanaugh A, Tomar R, Reveille J, Solomon DH, Homburger HA. Guidelines for clinical use of the antinuclear antibody test and tests for specific autoantibodies to nuclear antigens. American College of Pathologists. *Arch Pathol Lab Med*. 2000;124(1):71-81. doi:10.5858/2000-124-0071-GFCUOT
11. Diagnosis and Tests. MedlinePlus website. Updated October 15, 2021. Accessed April 27, 2023. <https://medlineplus.gov/autoimmunediseases.html>

QuestDiagnostics.com

Quest®, Quest Diagnostics®, any associated logos, and all associated Quest Diagnostics registered or unregistered trademarks are the property of Quest Diagnostics. All third-party marks—® and ™—are the property of their respective owners. © 2023 Quest Diagnostics Incorporated. All rights reserved. M112296 8/2023

