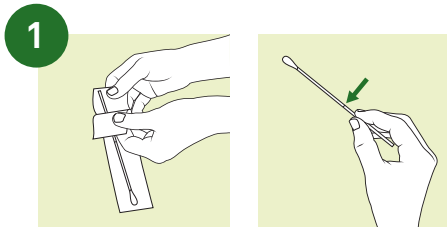


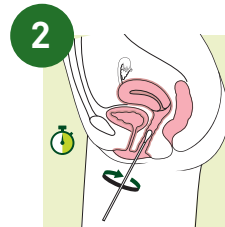
Aptima® Multitest Swab Specimen Collection Kit

Patient collection procedure guide

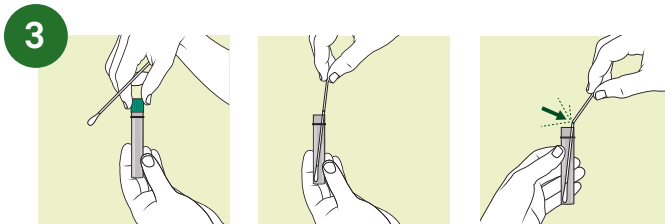
Wash hands before starting. If you have any questions about this procedure, please ask your healthcare provider or call the patient support line at 1.833.700.2423 Monday through Friday 8:00 AM to 7:00 PM ET (not including weekends and holidays).



Partially open the package and remove swab. Do not touch the soft tip or lay the swab down, and do not ingest or drink the contents of the vial. If the soft tip is touched, laid down, or dropped, discard it and get a new Aptima® Multitest Swab Specimen Collection Kit. **Hold swab, placing thumb and forefinger in the middle of swab shaft over the black score line.**

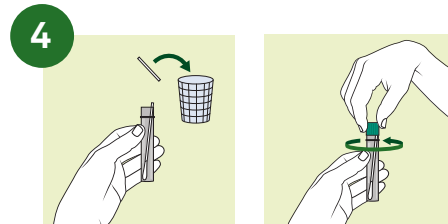


Carefully insert swab into opening of the vagina (about 2 inches [5 cm]), and gently **rotate swab for 10 to 30 seconds**. Make sure swab touches the vaginal walls, so that moisture is absorbed by the swab. Withdraw swab without touching skin.



While holding swab in your hand, unscrew tube cap. Do not spill tube contents. If tube contents are spilled, request a new Aptima Multitest Swab Specimen Collection Kit. Additionally, if you spill any of the vial contents on your skin or if it gets into your eyes, immediately flush the area with water.

Immediately place swab into transport tube so black score line is at top of tube. Align score line with top edge of tube, and carefully break swab shaft.



Discard top portion of shaft. **Tightly screw cap onto tube.** Return tube as instructed by your healthcare provider.

Scan the QR Code for video instructions on collecting your sample.



QuestDiagnostics.com

Quest Diagnostics Incorporated and its subsidiaries (Quest) complies with applicable federal civil rights laws and does not discriminate on the basis of race, color, national origin, age, disability, or sex. ATTENTION: If you speak English, language assistance services, free of charge, are available to you. Call 1.844.698.1022. ATENCIÓN: Si habla español (Spanish), tiene a su disposición servicios gratuitos de asistencia lingüística. Llame al 1.844.698.1022. 注意：如果您使用繁體中文 (Chinese)：您可以免費獲得語言援助服務。請致電 1.844.698.1022.

Quest®, Quest Diagnostics®, any associated logos, and all associated Quest Diagnostics registered or unregistered trademarks are the property of Quest Diagnostics. All third-party marks—® and ™—are the property of their respective owners. ©2021–2024 Quest Diagnostics Incorporated. All rights reserved. PP5134 12/2024