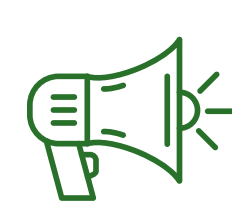


Building a culture of lab stewardship

a survey of lab leaders



A recent Quest survey of hospital and health system leaders showed how lab stewardship programs have been used to improve lab operations in a complex healthcare environment.



The pressures of modern healthcare are **bearing down on health systems like never before**



According to the survey, these are the **top 3 business challenges facing today's health systems¹**:



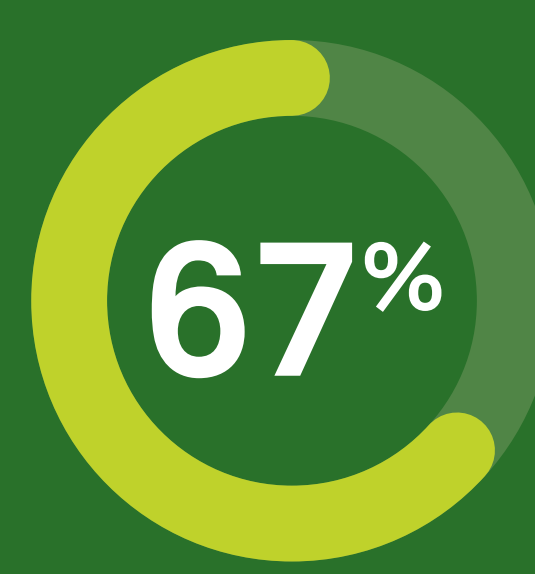
The clinical laboratory plays a vital role across the entire healthcare continuum



of care-based decisions are informed by diagnostic testing²



of genetic tests verified were incorrectly ordered and corrected to another test³

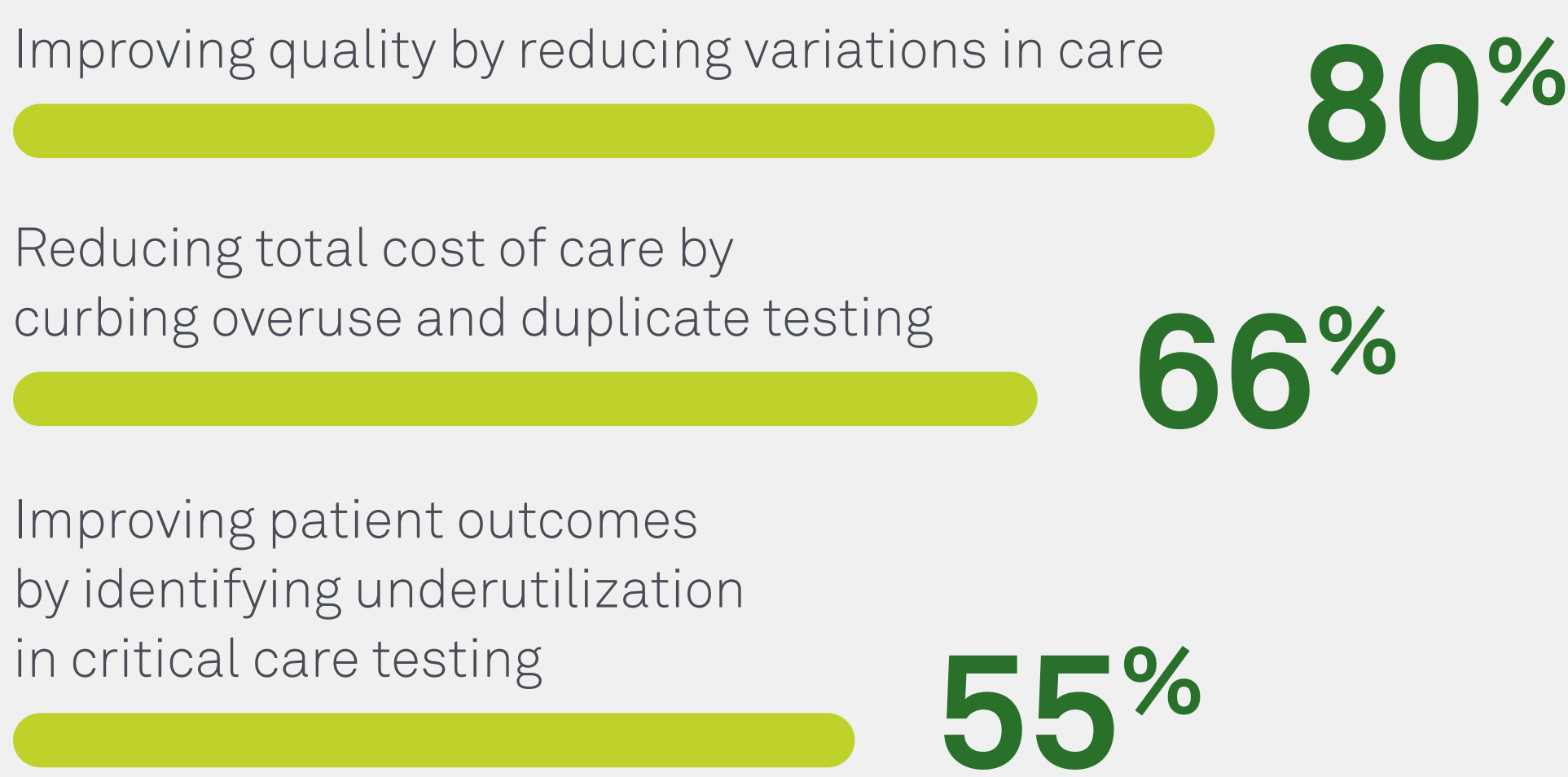


of hospital lab directors see the lab as a cost center rather than a profit center⁴



The large majority of health system leaders (67%) stated that **ordering the right test, for the right patient, at the right time is the primary objective** of their lab stewardship program¹

The top 3 short-term goals of survey respondents align with the long-term value of a successful lab stewardship program:

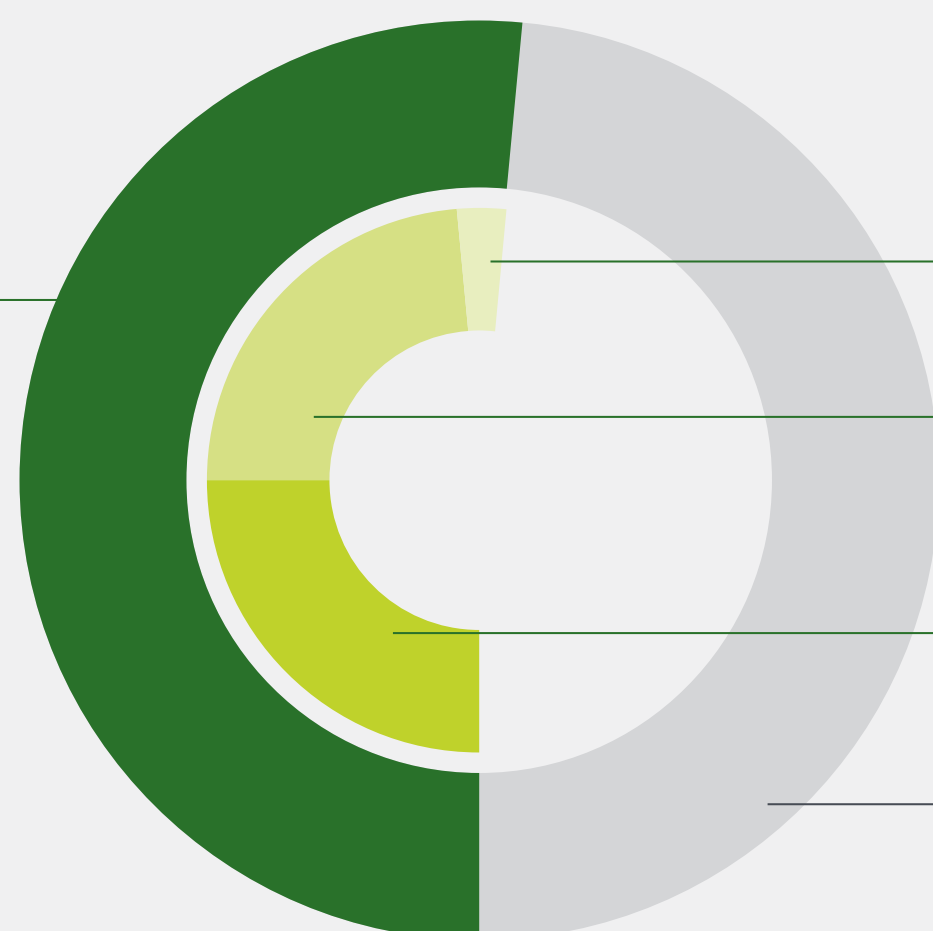


n = 96 hospital and health system leaders

Reinforcing strategic goals

53%

of survey respondents have some type of lab stewardship program in place



- 6%** Have a well-established lab stewardship program
- 22%** Are building and expanding a lab stewardship program
- 25%** Have just started to create a lab stewardship program
- 47%** Labs that do not have a lab stewardship program



49% of survey respondents say these are the **top 2 barriers to implementing an effective lab stewardship program** >

1
2

Provider resistance

Limited IT resources to build custom reporting and dashboards



Quest is elevating the lab from support function to strategic advantage

Quest Lab Stewardship embraces 3 basic principles to serve the goal of powering high-quality, affordable care:



Using data to evaluate the current state of care



Fostering collaboration to identify and act on potential improvements



Measuring success and building on it



Ready to do more for your patients and health system?
Get the conversation started >

References
 1. Quest Lab Stewardship survey; Health systems market. *Sage Growth Partners*. Published February 28, 2022. Accessed May 20, 2022.
 2. CDC. Strengthening clinical laboratories. Updated November 15, 2018. Accessed August 5, 2021. <https://www.cdc.gov/csels/dls/strengthening-clinical-labs.html>
 3. Data on file. Quest Diagnostics; 2017
 4. Becker's Hospital Review. Hospital labs: money pits or profit centers? Published April 18, 2012. <https://www.beckershospitalreview.com/finance/hospital-labs-money-pits-or-profit-centers.html>
 Image content features a model and is intended for illustrative purposes only.