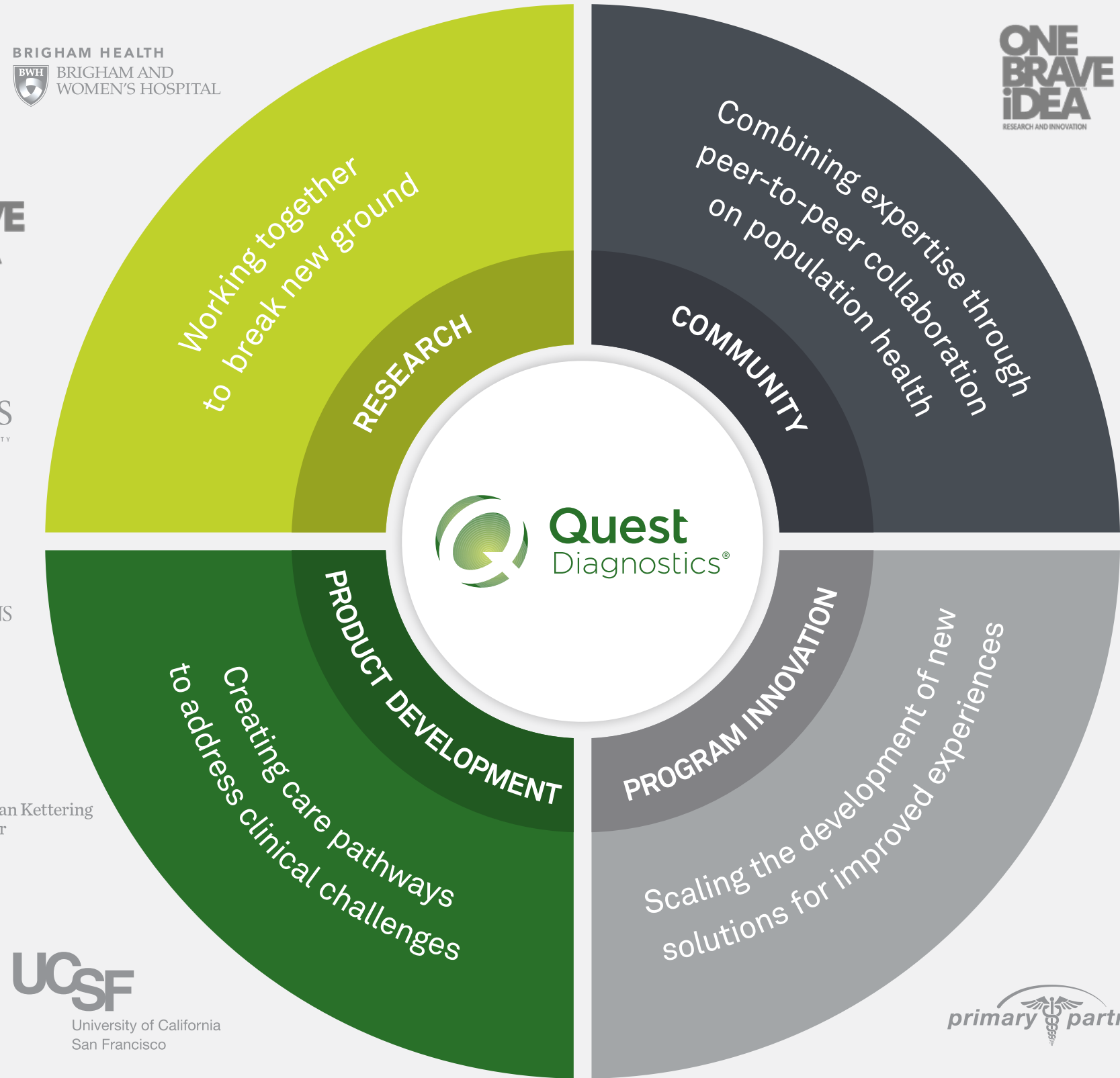


POWERING CLINICAL COLLABORATIONS



BRIGHAM HEALTH
BRIGHAM AND WOMEN'S HOSPITAL

ONE BRAVE IDEA
RESEARCH AND INNOVATION

RUTGERS
THE STATE UNIVERSITY OF NEW JERSEY

JOHNS HOPKINS UNIVERSITY

Memorial Sloan Kettering Cancer Center

UCSF
University of California San Francisco

ONE BRAVE IDEA
RESEARCH AND INNOVATION

Yale New Haven Health

UNT
UNIVERSITY OF NORTH TEXAS

UPMC
LIFE CHANGING MEDICINE

ONE BRAVE IDEA
RESEARCH AND INNOVATION

primary partners

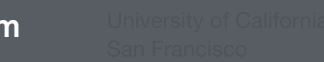
All Quest Diagnostics laboratory-developed tests (LDTs) are developed, validated, and exclusively used at CLIA-certified Quest Diagnostics laboratories.

POWERING CLINICAL COLLABORATIONS

See how Quest Diagnostics works with leading health organizations to advance diagnostic medicine.

We're engaging in customized collaborations with leading health organizations, offering diagnostic expertise in key areas such as collaborative research, product development, program innovation, and community engagement.

LEARN MORE about Quest's latest research and industry collaborations
QuestDiagnostics.com



All Quest Diagnostics laboratory-developed tests (LDTs) are developed, validated, and exclusively used at CLIA-certified Quest Diagnostics laboratories.



Yale NewHaven Health



UPMC LIFE CHANGING MEDICINE





Pursuing new methods for uncovering cardiovascular risk

We're working with Brigham and Women's Hospital to change how coronary heart disease is detected, prevented, and treated.

We supported the **JUPITER clinical trial** to assess cardiovascular events that occur despite low or normal LDL cholesterol; the **ion mobility test** was demonstrated to reveal risk beyond the standard lipid test.

RESEARCH

< GO BACK

NEXT >



Supporting the fight against coronary heart disease

One Brave Idea, co-founded by the American Heart Association and Verily, pursues unconventional scientific approaches to advance the fight against coronary heart disease.

As a pillar supporter, we're contributing **biomarker implementation**, **population health analytics**, and a national lab platform.

RESEARCH

< GO BACK

NEXT >



Optimizing health and athletic performance

The Quest Diagnostics Sports Science Laboratory at the Rutgers Center for Health and Human Performance **combines athletic performance research with our biometric testing** for competitive and professional athletes.

We're focusing initial research projects in 3 areas:

- 1** How changes in biomarker levels are associated with training load and performance-related variables
- 2** The correlation between biomarkers and performance, metabolism, nutrition, and bone density in competitive male triathletes
- 3** How new point-of-care micro-sampling technologies may expand hormone analysis capabilities

RESEARCH

< GO BACK

NEXT >



Prioritizing mental health for employees

In collaboration with Johns Hopkins, we launched **Balance**, a program to provide employees with better **access to high-quality mental healthcare**.

We're screening employees for mental health issues; identifying those at risk for conditions such as depression, anxiety, traumatic stress, or alcohol use; and helping those employees get the mental healthcare they need.

PRODUCT DEVELOPMENT

< GO BACK

NEXT >



Memorial Sloan Kettering
Cancer Center



Advancing precision medicine in cancer diagnosis and treatment

Working with Memorial Sloan Kettering Cancer Center (MSK), we're using molecular lab testing to improve physicians' ability to treat patients with breast, prostate, colon, lung, and a variety of other solid tumor cancers by giving them a better understanding of the **genomic underpinnings of their patients' illnesses.**

We're collaborating with MSK to identify the biological effect, prevalence, prognostic information, and treatment implications for each oncologic variant.

PRODUCT DEVELOPMENT

< GO BACK

NEXT >



University of California
San Francisco



Developing a novel approach to dementia screening and care

Together with the University of California San Francisco Memory and Aging Center, we designed a **clinical pathway** to help guide primary care physicians as they **screen for dementia**.

The pathway includes several components, including a decision tree based on best practices; a 10-minute, tablet-based neurobehavioral assessment; multimedia education materials for patients, caregivers, and healthcare providers; standards for using neuroimaging; and an algorithm for classifying patients into major dementia categories.

PRODUCT DEVELOPMENT

< GO BACK

NEXT >

POWERING CLINICAL LABORATORIES



Transforming tools and tests for dementia care

With Primary PartnerCare, we're **implementing a new clinical pathway** for dementia screening—created with the [University of California San Francisco Memory and Aging Center](#)—to reduce variation for better outcomes.

PROGRAM INNOVATION

< GO BACK

NEXT >



Supporting the fight against coronary heart disease

One Brave Idea, co-founded by the American Heart Association and Verily, pursues unconventional scientific approaches to advance the fight against coronary heart disease.

As a pillar supporter, we're contributing **biomarker implementation**, **population health analytics**, and a national lab platform.

PROGRAM INNOVATION

< GO BACK

NEXT >



Powering more effective methods of diagnostic testing

We're working with University of Pittsburgh Medical Center (UPMC) to pursue several opportunities for innovation, including best practices in diagnostics, diagnostic centers of expertise, and new molecular test development.

In 2020, researchers at Quest and UPMC published **new evidence** that the HPV screening test is significantly less likely to detect cervical cancer and precancer than is **cotesting, a method that combines HPV and Pap testing** using the same specimen.

PROGRAM INNOVATION

< GO BACK

NEXT >

All Quest Diagnostics laboratory-developed tests (LDTs) are developed, validated, and exclusively used at CLIA-certified Quest Diagnostics laboratories.



Spearheading novel techniques for population health management

Collaborating with University of North Texas Health Science Center, we're powering better outcomes by improving prevention and treatment for **patients at high risk** for diseases such as diabetes and chronic kidney disease.

Together, we're focusing on developing novel techniques for **population health management.**

COMMUNITY

< GO BACK

NEXT >

Working with physicians to diagnose and treat patients

We're providing primary lab and esoteric testing support for Yale New Haven Health and helping to manage patients throughout the system for better outcomes.

Our **medical experts** are valued **consultants and collaborators**, working with Yale physicians to help diagnose and treat patients.



Supporting the fight against coronary heart disease

One Brave Idea, co-founded by the American Heart Association and Verily, pursues unconventional scientific approaches to advance the fight against coronary heart disease.

As a pillar supporter, we're contributing **biomarker implementation**, **population health analytics**, and a national lab platform.

COMMUNITY

< GO BACK

NEXT >